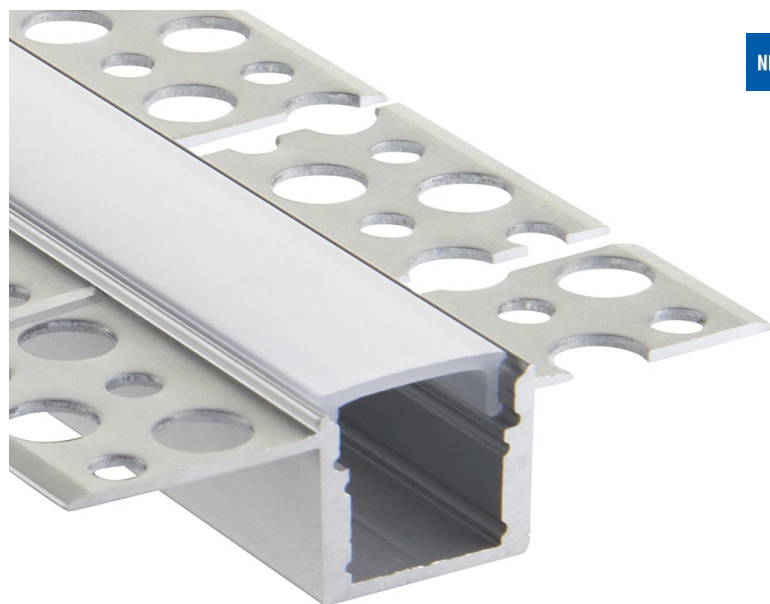


113564



NEW

The Rigel Plaster-in is an easy to install plaster-in extrusion profile which benefits from having a push on polycarbonate diffuser. It effectively conceals the LED tape and gives a softer lighting effect. Designed to be plastered into the ceiling or wall during the early stages of a build, allowing the LED tape to be fitted later.

Constructed from aluminium & polycarbonate

Shipment Carton Qty: 6

 Save As PDF

Case Quantities

- Proj: 12.86mm W: 54.6mm L: 2000mm
- 2YR Warranty
- Weight: 0.3 Kg